



**Big Bag  
Filling**

**Powder Handling Excellence**



# DEC – Big Bag Filling Applications

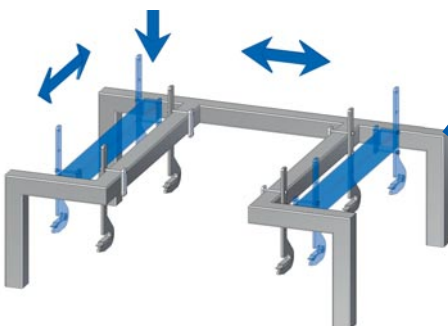
Dust-free and accurate filling of FIBC's

Dec's Big Bag filling stations offer a variety of packaging concepts. These range from simple inflatable gaskets to liner systems which, if necessary, can be integrated into a glove box.

The filling systems are of a modular design depending on the process and containment requirements.

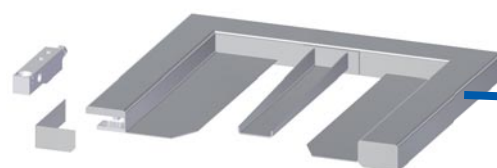
## Frame

The frame structure can be adapted to any big bag ensuring its optimal position. The attached loop holders can be adjusted in height as well as in depth. When removing the filled big bags from the station, the bindings loosen automatically, so manual unhooking is not required.



## Weighing unit

For the precise filling of containers. The design of the scale is determined by the specific customer requirements. The stations are generally available with weighbridges or E- and U-shaped scales for easy removal of the filled containers by forklift.



## Big Bag Support Frames

are available in mild steel and stainless steel



## Dosing Systems

### DosiValve

The DosiValve has been specifically designed to dose difficult flowing products accurately. The lack of rotating parts allows for easy cleaning. The DosiValve is a cost-effective, efficient and flexible dosing system. With the optionally integrated fluidization cone even hard-to-handle material such as sticky or wet powders can be easily dosed.

### Pinch Device

The pinch device allows for accurate dosing, accomplished by a flexible tube which is compressed by pinch bars. All mechanical elements are arranged outside the tube and not in contact with the product.



## De-dusting and Ventilation Equipment

The filling station includes a filter to stop powder loss to the extract system and also to inflate the big bags via the on-site compressed air or nitrogen supply.

## Scale Decoupling

The highly flexible compensator is particularly suited for precise weighing applications. It is fixed by TriClamp connections and allows for an easy and dust-tight connection. Its special shape prevents product deposits being retained within the compensator.

Material: EPDM, FPM.  
FDA compliant, anti-static.



## Big Bag Filling System with Lifting Column

This version with integrated lifting column enables the operator to access easily from several sides. This unit can be quickly adapted to different container sizes, either manually or by automatic height adjustment.



## DEC Docking Systems

The right connection for your requirements



## Filling Head with Inflation Hose

This filling head is designed for a consistent big bag inlet diameter. For variable diameters we provide a solution comprising a counter-ring and an integrated inflatable gasket, to which the big bag is tightly pressed on.



## Filling Head with Counter-Ring and Integrated Inflatable Seal

The inflatable gasket of this filling head is integrated in the counter-ring and presses the liner to the filling head from the outside, therefore the inflatable gasket is not in contact with the product.



## UniDock System

Dec's UniDock System\* allows the simplified charging and discharging of big bags, whilst ensuring high containment level (OEB 4), efficiency and reliable operation.

\*patent pending

## DCS Filling System

The DCS – Drum Containment System\* is used when high containment requirements are a priority. Highly economical in comparison with conventional isolation systems, the DCS permits precise, contamination free filling of big bags.



\*patented





#### Switzerland

##### **Dec Group**

Z. I. Larges Pièces A  
Chemin du Dévent  
P. O. Box 9  
1024 Ecublens

Tel: +41 21 694 20 40  
Fax: +41 21 694 20 59

#### Germany

##### **Dec Deutschland GmbH**

Max-Knöferl-Str. 6  
85290 Geisenfeld

Tel: +49 8452 73223 0  
Fax: +49 8452 73223 11

#### Ireland

##### **Dec Ireland**

Derry, Barefield  
Ennis. Co. Clare  
Ireland

Tel: +353 86 606 7001  
Fax: +353 65 671 0111

#### UK

##### **Dec UK Ltd.**

The Beetham Suite  
Clawthorpe Hall Business Centre  
Burton  
Lancashire  
LA6 1NU

Tel: +44 1524 784 345  
Fax: +44 1524 784 353

#### India

##### **Dietrich Engineering Consultants**

##### **India Pvt. Ltd**

Churchgate House  
Veer Nariman Road 32-34  
Mumbai - 400 001

Tel: +91 22 2288 1006  
Fax: +91 22 2204 9408

#### Poland

##### **Tekpro Sp. z o.o.**

ul. Wojska Polskiego 9  
39-300 Mielec

Tel: +48 17 788 6428  
Fax: +48 17 774 5150

#### USA

##### **Dec USA Inc.**

1118 Industrial Pkwy.  
Brick, NJ 08724

Tel: +1 732 2027536  
Fax: +1 908 6030145

#### China

##### **Dec China**

Building 3, 526 Fute No.3 Road E,  
Pilot Free Trade Zone  
Shanghai, PRC 200131

Tel: +86 135 2424 8975



# Powder Handling Excellence